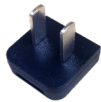


90XL Meter Parts & Accessories 2018 Price List



350150603



201110026



201110021



201110025



201110022



201110023



201110024

Modules



350150600



350150602



350150601

Adapters



350120002



350120003

Part No.	Description	Qty.	Price
350150603	90XL Display Module	1 ea.	\$1,290
201110021	90XL Power Adapter (Choose Appropriate Blade Below)	1 ea.	\$77
201110025	USA Power Blade	1 ea.	\$2
201110022	Euro Power Blade	1 ea.	\$3
201110023	UK Power Blade	1 ea.	\$5
201110024	Australia Power Blade	1 ea.	\$5
201110026	Chinese Power Blade	1 ea.	\$5
350150600	90XL Conductivity/Temperature Module	1 ea.	\$615
350150602	90XL pH Module with Probe Assembly	1 ea.	\$615
350150601	90XL Pressure Module	1 ea.	\$615
350150605	90XL Pressure Module with +/-0.8 mmHg at 0-300 mmHg	1 ea.	\$615
350120002	Negative pressure Adapter	1 ea.	\$57
350120003	In-Line Adapter	1 ea.	\$52
91.0011	Luer Fittings Kit	Pkg of 3	\$37
93.0008	Fittings, Female Luer Coupler	Pkg of 10	\$12
201110005	pH Probe Assembly	1 ea.	\$136
303110075	Display Module Cover/Holder	1 ea.	\$20
503110024	IV Pole Connector	1 ea.	\$81
201110003-1	90XL Carrying Case with Cut-outs	1 ea.	\$303
350120005	Monitoring Line & Stopcock	1 ea.	\$20
503110017	Sampling Kit	1 ea.	\$60
503110023	Transducer Protector	1 ea.	\$4
350110015	Sensor Module Extension Cable, yellow, 2 meter length	1 ea.	\$73
350110016	Sensor Module Extension Cable, yellow, 5 meter length	1 ea.	\$83



91.0011



303110075



503110024



201110003-1



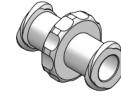
201110005



503110017



503110023



93.0008



350110015

350110016

For more information, contact Mesa Labs or your local distributor

Ordering Information:

Tel: 800-992-6372

303-987-8000

Fax: 303-987-8989

customerservice@mesalabs.com

Payment Terms: Net 30 days WAC, MasterCard, Visa, AmEx accepted

Shipping: Prepaid and added to invoice

Product specifications and pricing subject to change without notice.

Sales Information:

12100 W. 6th Avenue

Lakewood, CO 80228 USA

dialyguard.mesalabs.com

medsales@mesalabs.com